



Velstone
Ltd

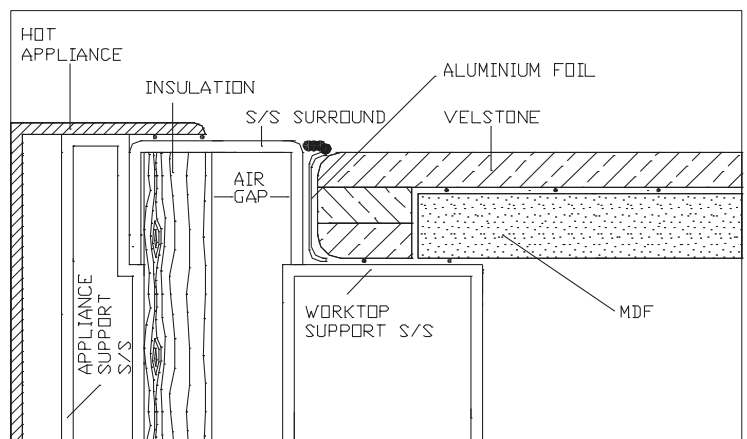
Hot Surface Counter Installation

Special installation Techniques are needed for commercial hot service counters due to continuous and concentrated high temperatures.

The necessary features are:

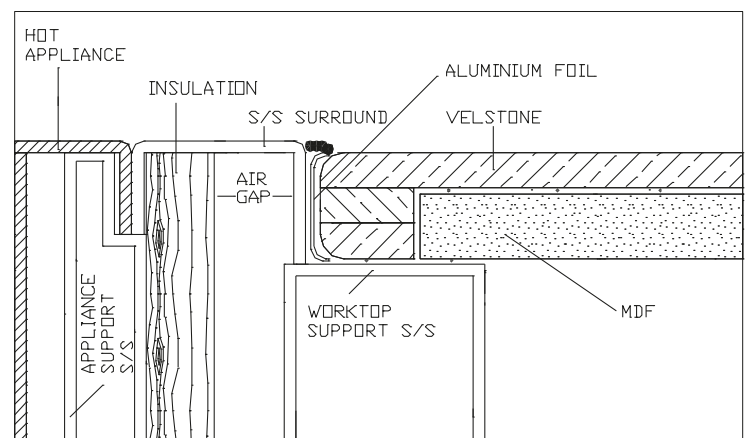
- 1.** The appliance must be supported on a frame independently and not on the work top.
- 2.** Insulation and air gap (minimum 25 mm each) must be provided between the heat source and Velstone.
- 3.** Only Router should be used to make cut outs. All corners and edges must be rounded. All the cut outs must be reinforced by adding extra Velstone thickness.
- 4.** Heat reflecting Aluminium tape should be used.
- 5.** Any overhang over 50 mm should be supported by steel frame support. The cut outs should be fully supported as shown.
- 6.** Intake fan and vent ducts to be provided in the cabinets housing heat generating appliance.
- 7.** At least 3 mm gap must be maintained between the s/s surround and Velstone.

Hot appliance with flange



This configuration applies to 13mm surface applications only

Hot appliance without flange



This configuration applies to 13mm surface applications only